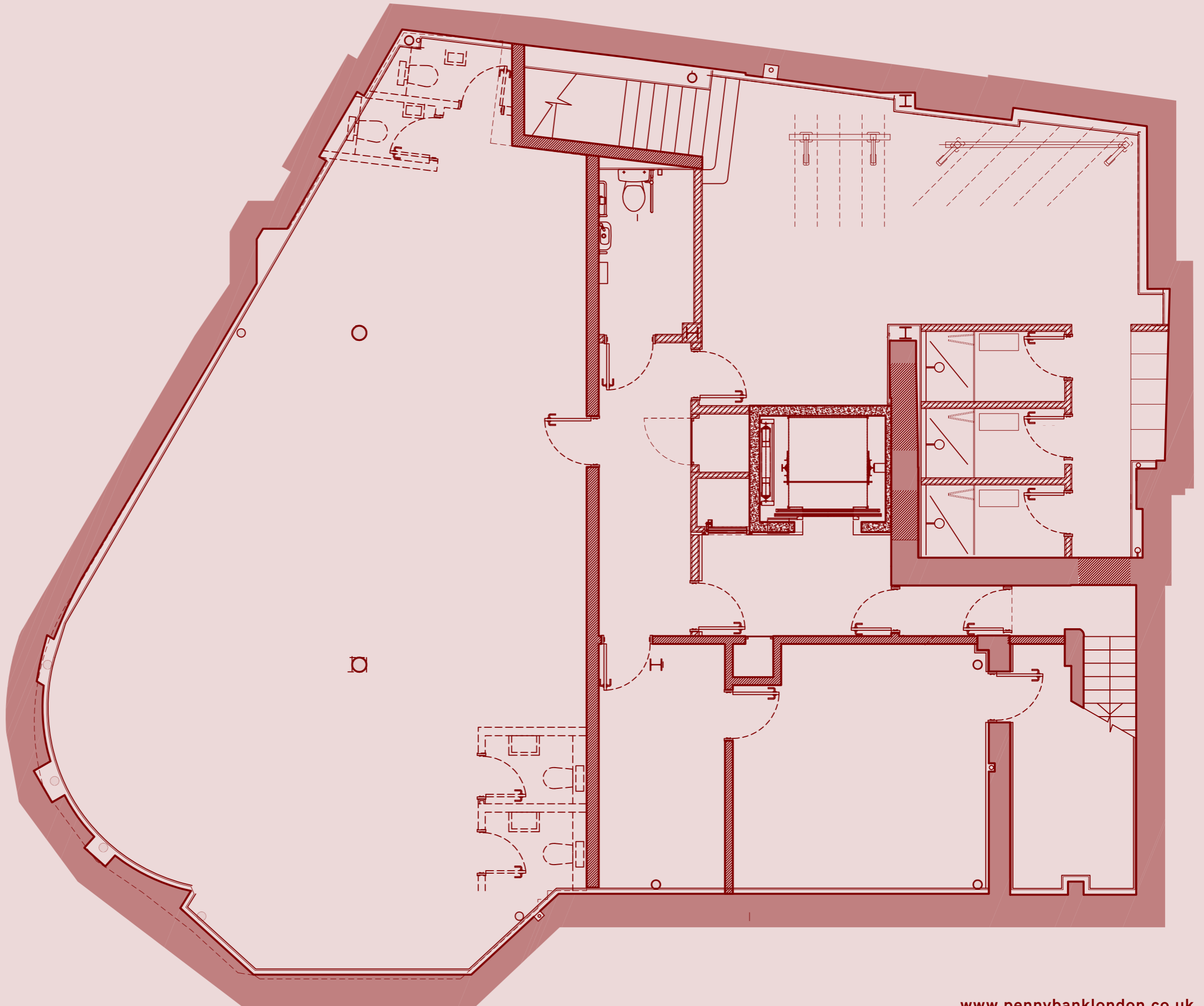


# Basement

1,270 SQ FT



## Contacts:

### OFFICES



**Tom Kemp**  
tom@hk-london.com  
T: +44 (0)20 7100 5555  
M: +44 (0)7770 721 009

**Stephen Foster**  
stephen@hk-london.com  
T: +44 (0)20 7100 5555  
M: +44 (0)7917 841 891

**Johnny Armour**  
johnny@hk-london.com  
T: +44 (0)20 7100 5555  
M: +44 (0)7837 126 052

### RETAIL



**Anna Fayne**  
afayne@nashbond.co.uk  
T: +44 (0)207 290 4580

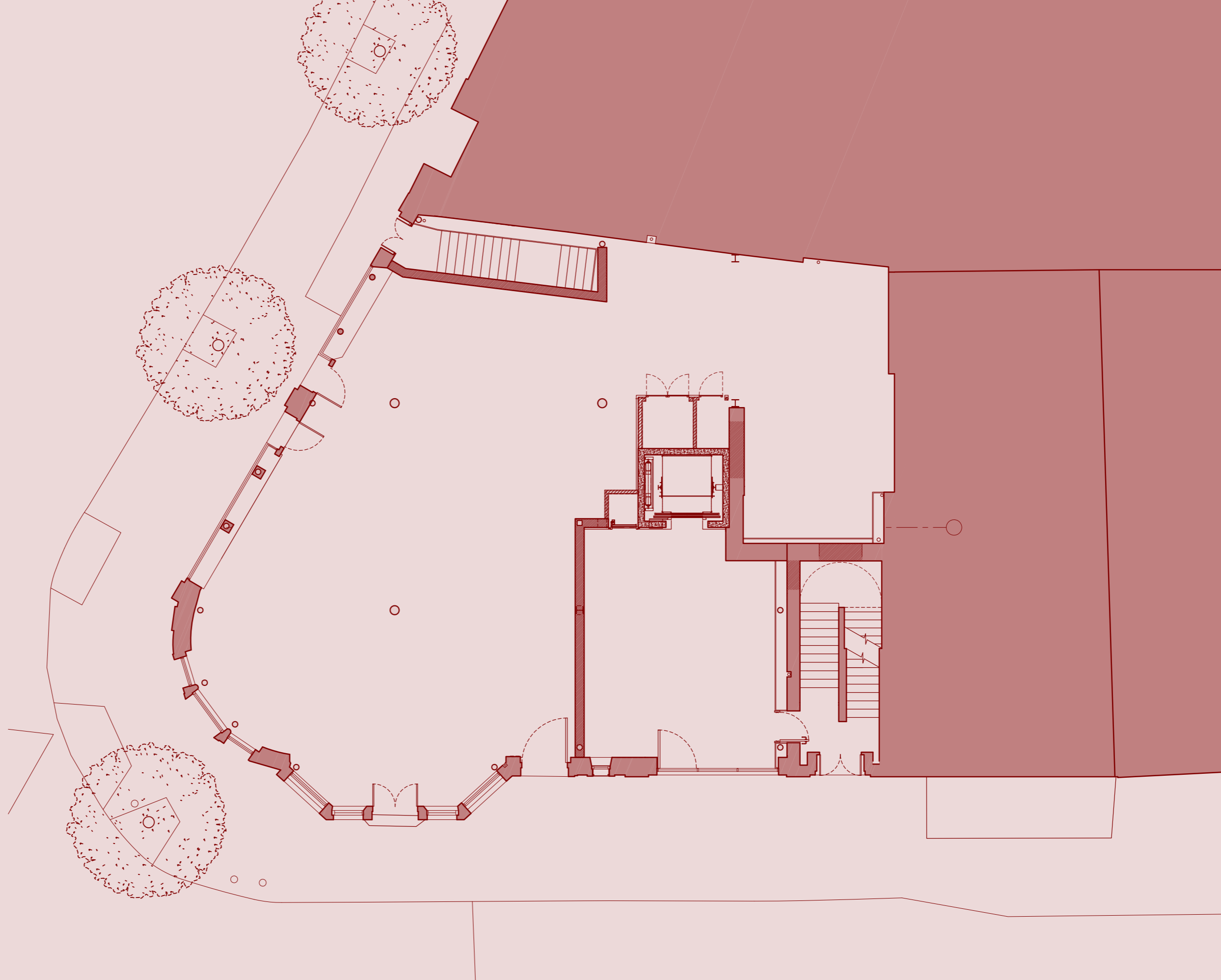
**Florence Mills**  
fmills@nashbond.co.uk  
T: +44 (0)207 290 4589



**Jason Smith**  
js@gms-estates.co.uk  
T: (0)20 7269 7691  
M: +44 (0)7968 780 915

## Ground floor

1,991 SQ FT



### Contacts:

#### OFFICES

 **HK LONDON**

**Tom Kemp**  
tom@hk-london.com  
T: +44 (0)20 7100 5555  
M: +44 (0)7770 721 009

**Stephen Foster**  
stephen@hk-london.com  
T: +44 (0)20 7100 5555  
M: +44 (0)7917 841 891

**Johnny Armour**  
johnny@hk-london.com  
T: +44 (0)20 7100 5555  
M: +44 (0)7837 126 052

#### RETAIL

 **nashbond**

**Anna Fayne**  
afayne@nashbond.co.uk  
T: +44 (0)207 290 4580

**Florence Mills**  
fmills@nashbond.co.uk  
T: +44 (0)207 290 4589

 **gms**

**Jason Smith**  
js@gms-estates.co.uk  
T: (0)20 7269 7691  
M: +44 (0)7968 780 915

# First floor

1,981 SQ FT

## Contacts:

### OFFICES



**Tom Kemp**  
tom@hk-london.com  
T: +44 (0)20 7100 5555  
M: +44 (0)7770 721 009

**Stephen Foster**  
stephen@hk-london.com  
T: +44 (0)20 7100 5555  
M: +44 (0)7917 841 891

**Johnny Armour**  
johnny@hk-london.com  
T: +44 (0)20 7100 5555  
M: +44 (0)7837 126 052

### RETAIL

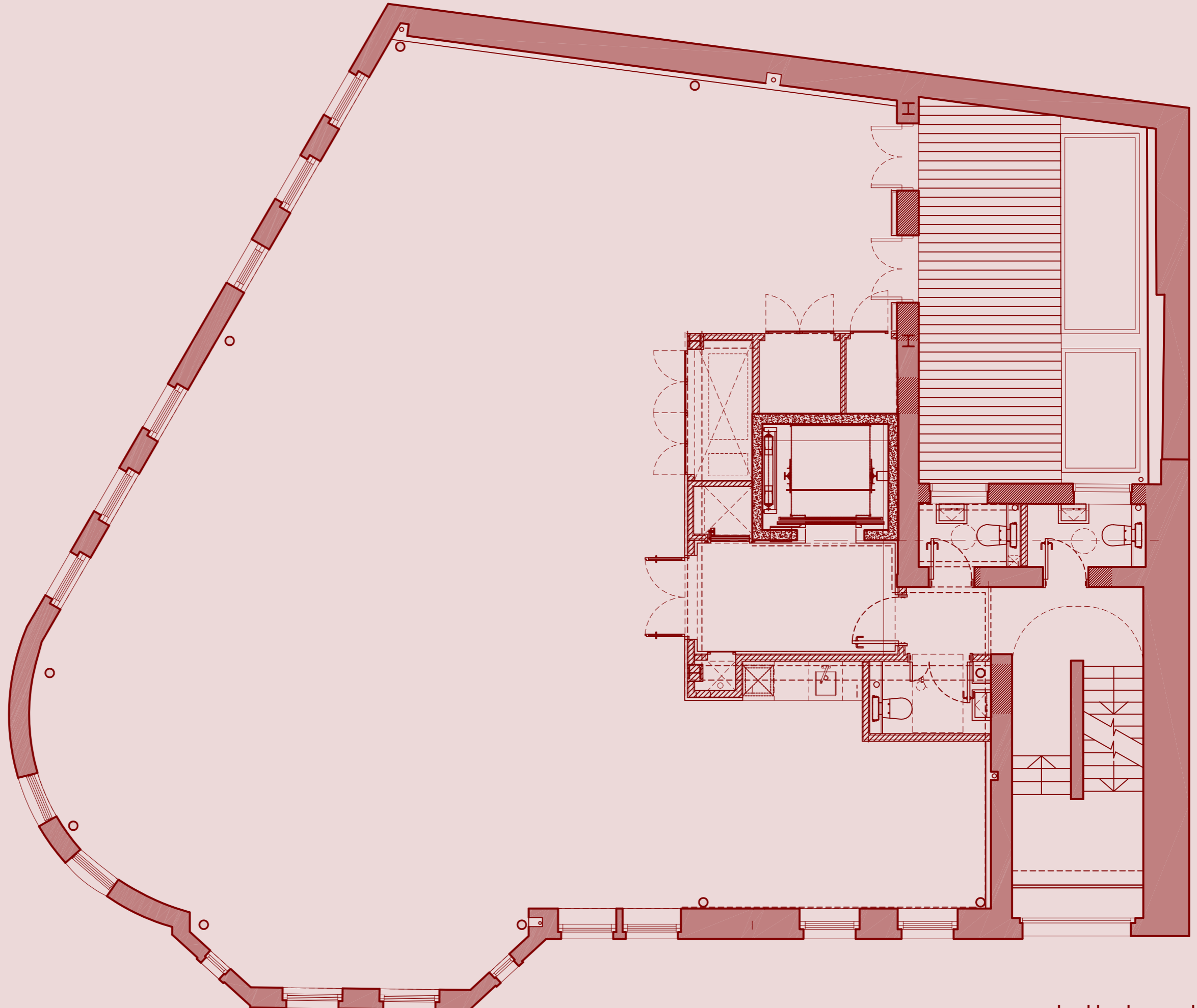


**Anna Fayne**  
afayne@nashbond.co.uk  
T: +44 (0)207 290 4580

**Florence Mills**  
fmills@nashbond.co.uk  
T: +44 (0)0207 290 4589

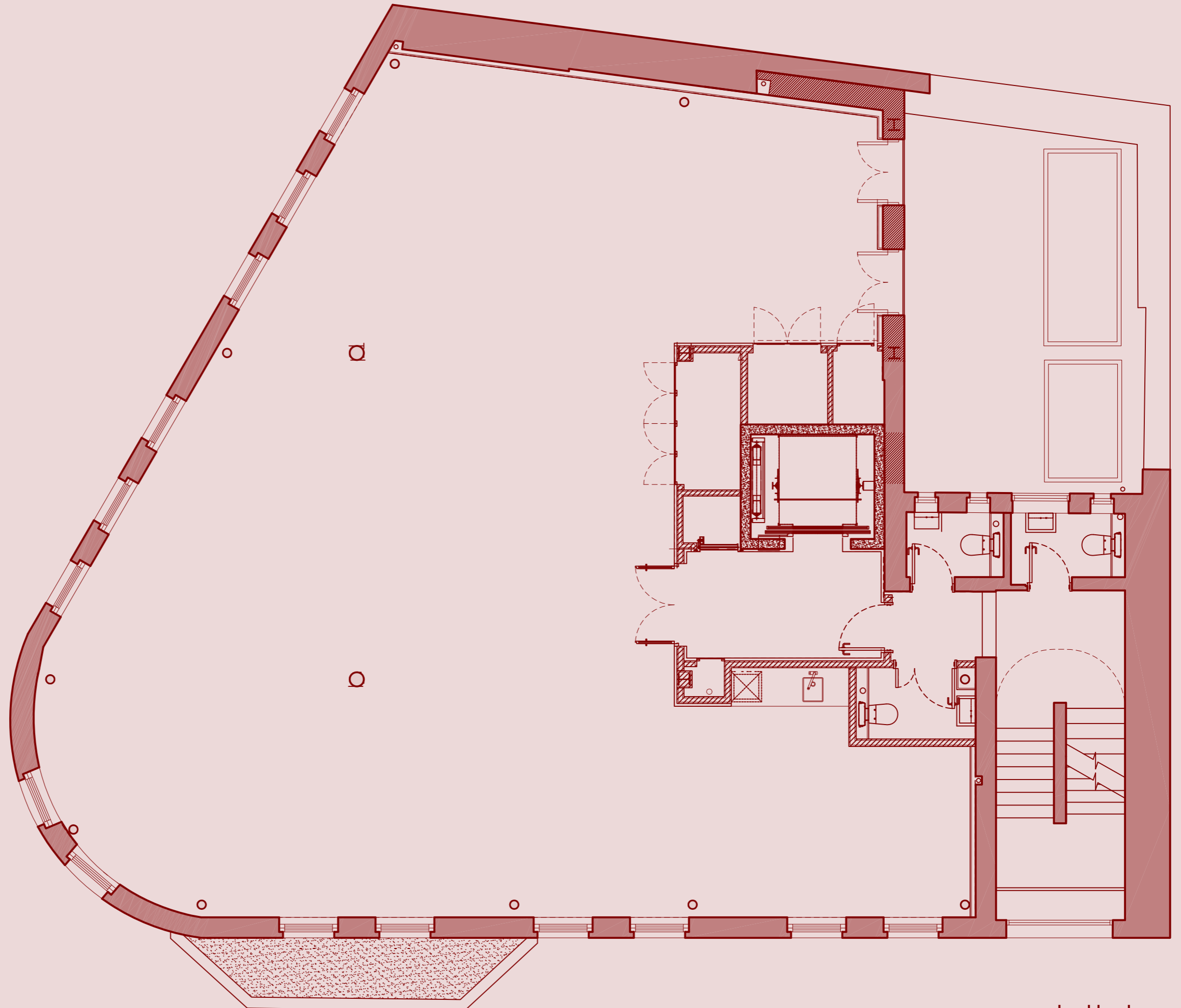


**Jason Smith**  
js@gms-estates.co.uk  
T: (0)20 7269 7691  
M: +44 (0)7968 780 915



## Second floor

1,916 SQ FT



### Contacts:

#### OFFICES



**Tom Kemp**  
tom@hk-london.com  
T: +44 (0)20 7100 5555  
M: +44 (0)7770 721 009

**Stephen Foster**  
stephen@hk-london.com  
T: +44 (0)20 7100 5555  
M: +44 (0)7917 841 891

**Johnny Armour**  
johnny@hk-london.com  
T: +44 (0)20 7100 5555  
M: +44 (0)7837 126 052

#### RETAIL



**Anna Fayne**  
afayne@nashbond.co.uk  
T: +44 (0)207 290 4580

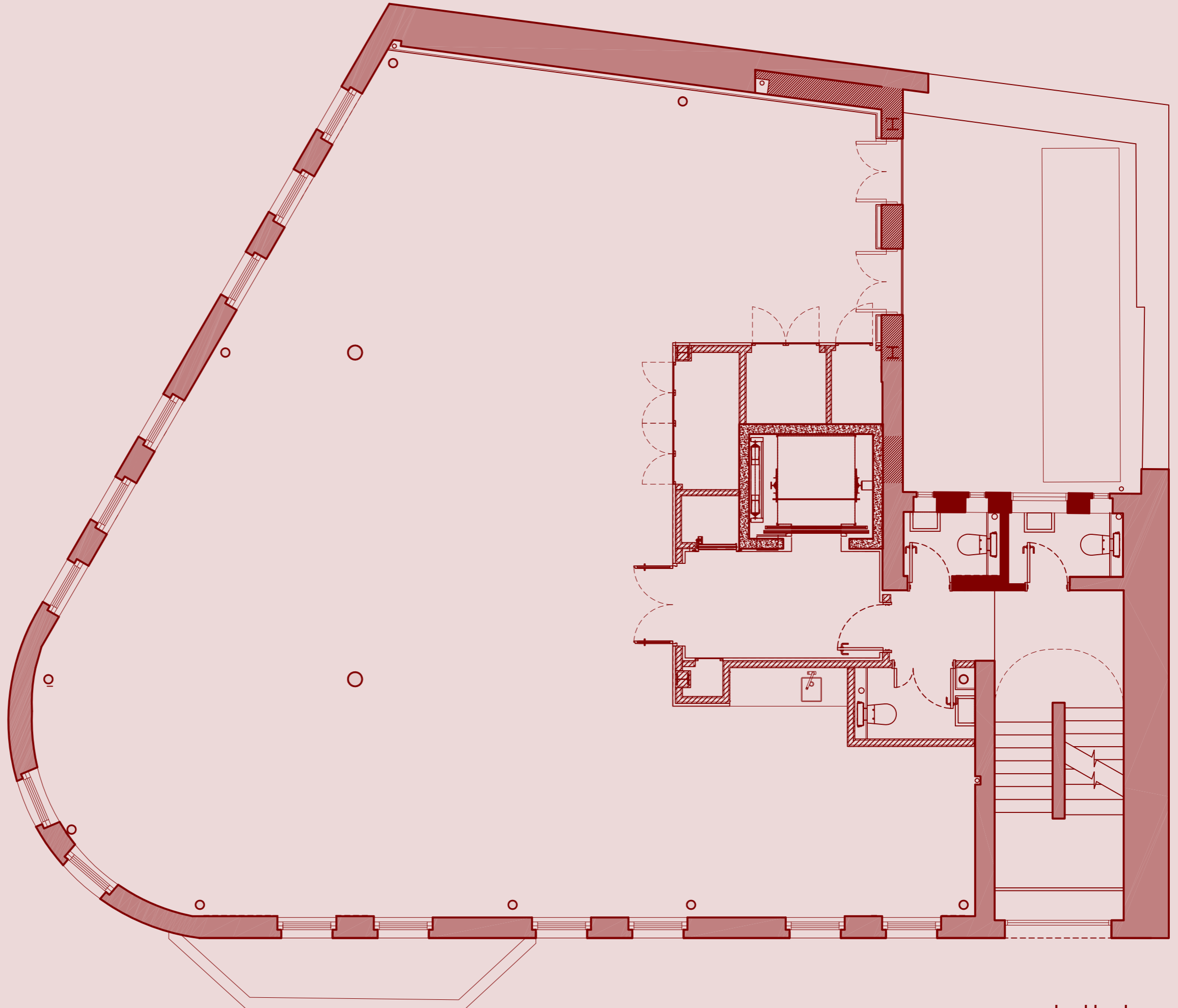
**Florence Mills**  
fmills@nashbond.co.uk  
T: +44 (0)207 290 4589



**Jason Smith**  
js@gms-estates.co.uk  
T: (0)20 7269 7691  
M: +44 (0)7968 780 915

# Third floor

1,916 SQ FT



## Contacts:

### OFFICES



**Tom Kemp**  
tom@hk-london.com  
T: +44 (0)20 7100 5555  
M: +44 (0)7770 721 009

**Stephen Foster**  
stephen@hk-london.com  
T: +44 (0)20 7100 5555  
M: +44 (0)7917 841 891

**Johnny Armour**  
johnny@hk-london.com  
T: +44 (0)20 7100 5555  
M: +44 (0)7837 126 052

### RETAIL



**Anna Fayne**  
afayne@nashbond.co.uk  
T: +44 (0)207 290 4580

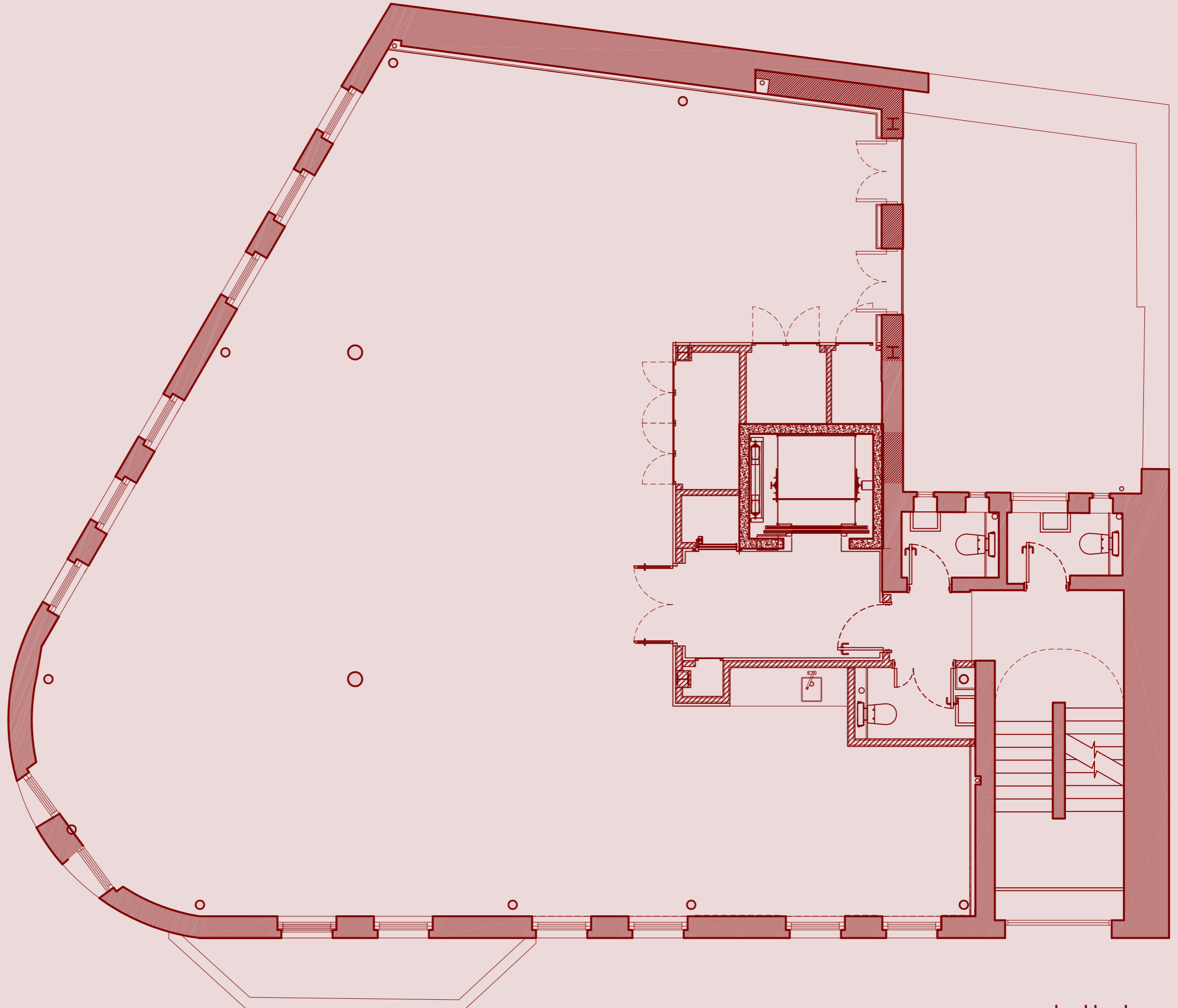
**Florence Mills**  
fmills@nashbond.co.uk  
T: +44 (0)207 290 4589



**Jason Smith**  
js@gms-estates.co.uk  
T: (0)20 7269 7691  
M: +44 (0)7968 780 915

# Fourth floor

1,916 SQ FT



## Contacts:

### OFFICES



**Tom Kemp**  
tom@hk-london.com  
T: +44 (0)20 7100 5555  
M: +44 (0)7770 721 009

**Stephen Foster**  
stephen@hk-london.com  
T: +44 (0)20 7100 5555  
M: +44 (0)7917 841 891

**Johnny Armour**  
johnny@hk-london.com  
T: +44 (0)20 7100 5555  
M: +44 (0)7837 126 052

### RETAIL



**Anna Fayne**  
afayne@nashbond.co.uk  
T: +44 (0)207 290 4580

**Florence Mills**  
fmills@nashbond.co.uk  
T: +44 (0)207 290 4589



**Jason Smith**  
js@gms-estates.co.uk  
T: (0)20 7269 7691  
M: +44 (0)7968 780 915

## Fifth floor

1,927 SQ FT

### Contacts:

#### OFFICES



**Tom Kemp**  
tom@hk-london.com  
T: +44 (0)20 7100 5555  
M: +44 (0)7770 721 009

**Stephen Foster**  
stephen@hk-london.com  
T: +44 (0)20 7100 5555  
M: +44 (0)7917 841 891

**Johnny Armour**  
johnny@hk-london.com  
T: +44 (0)20 7100 5555  
M: +44 (0)7837 126 052

#### RETAIL

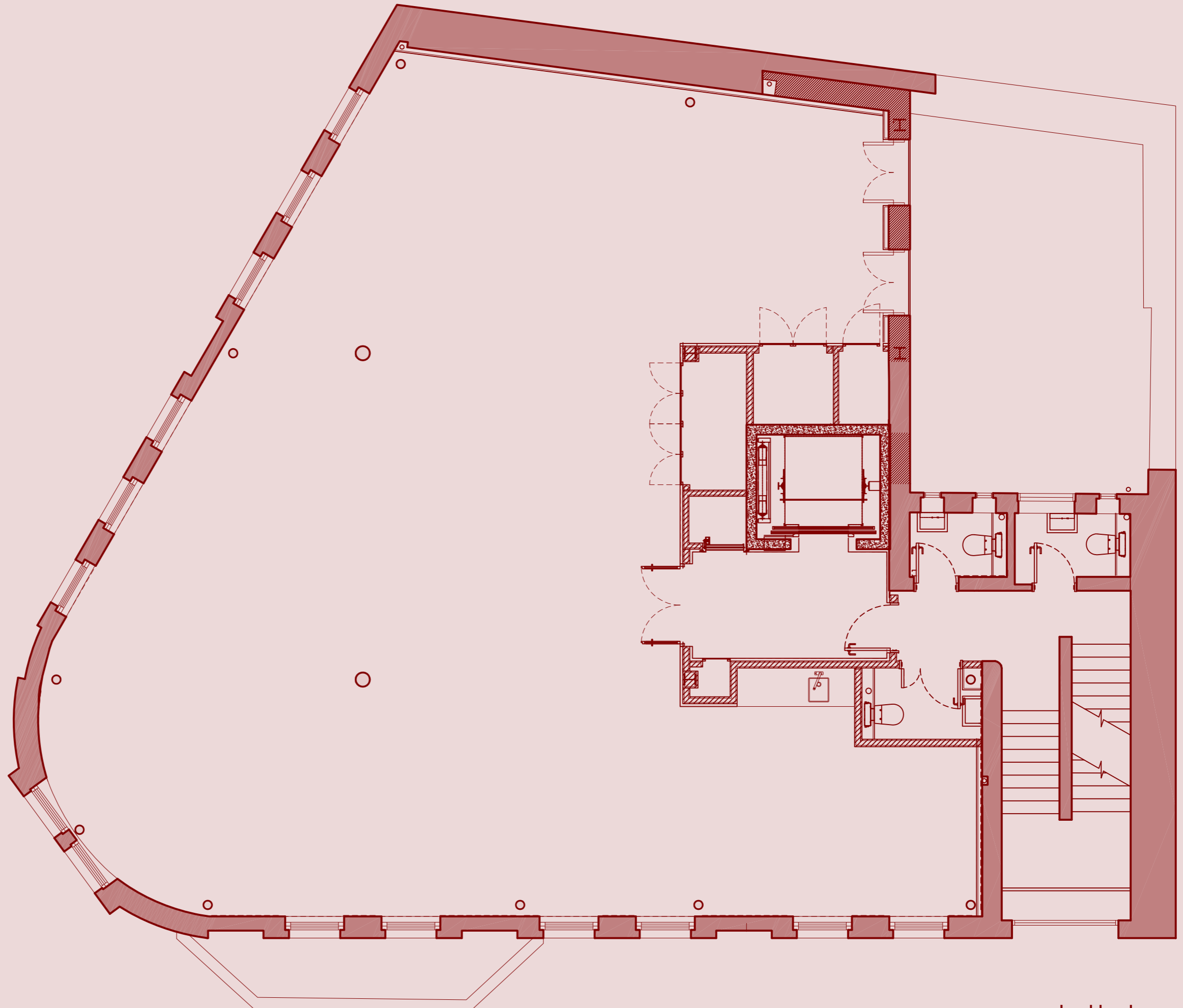


**Anna Fayne**  
afayne@nashbond.co.uk  
T: +44 (0)207 290 4580

**Florence Mills**  
fmills@nashbond.co.uk  
T: +44 (0)207 290 4589



**Jason Smith**  
js@gms-estates.co.uk  
T: (0)20 7269 7691  
M: +44 (0)7968 780 915



## Sixth floor

1,507 SQ FT

### Contacts:

#### OFFICES



**Tom Kemp**  
tom@hk-london.com  
T: +44 (0)20 7100 5555  
M: +44 (0)7770 721 009

**Stephen Foster**  
stephen@hk-london.com  
T: +44 (0)20 7100 5555  
M: +44 (0)7917 841 891

**Johnny Armour**  
johnny@hk-london.com  
T: +44 (0)20 7100 5555  
M: +44 (0)7837 126 052

#### RETAIL



**Anna Fayne**  
afayne@nashbond.co.uk  
T: +44 (0)207 290 4580

**Florence Mills**  
fmills@nashbond.co.uk  
T: +44 (0)207 290 4589



**Jason Smith**  
js@gms-estates.co.uk  
T: (0)20 7269 7691  
M: +44 (0)7968 780 915

