

STANDON HOUSE, 21 MANSELL STREET, LONDON E1

5,212 - 11,344 SQ FT



DESCRIPTION

Standon House has undergone a transformation to provide best in class creative workspace. The 1st & 5th floors provide light-filled, design-led offices. The floors benefit from a new high-spec fit out, including new furniture throughout. In addition, the 5th floor provides a private terrace with stunning views towards the City & Spitalfields.

LOCATION

The building sits moments away from Aldgate & Aldgate East Underground Stations. Spitalfields Market, Brick Lane and the City are all well within a 5 minute walk.

Public transport links are excellent with, Aldgate, Aldgate East, Tower Hill and Fenchurch Street mainline and underground stations all close by. Liverpool Street and Bank are also within easy reach. The arrival of the Elizabeth Line to Whitechapel has improved transport links further.

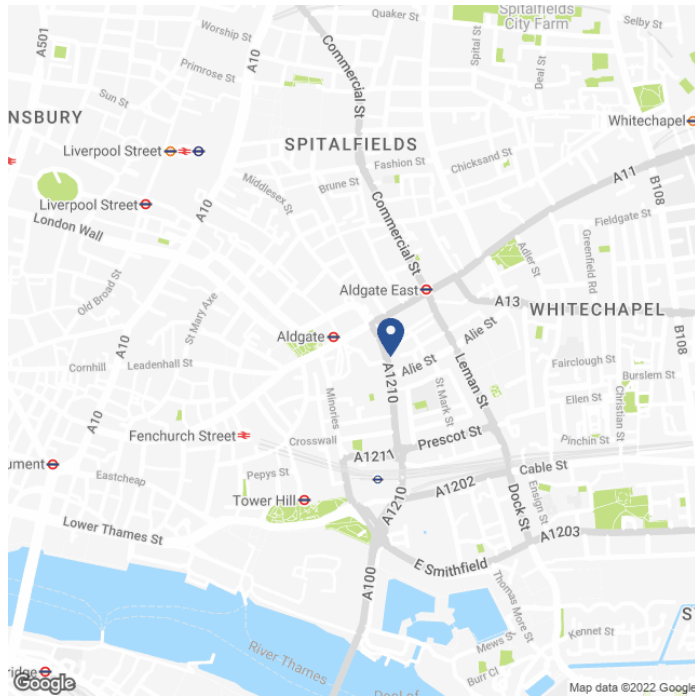
SPECIFICATION

- New landlord category B fit out.
- New furniture throughout.
- Private terrace (5th floor).
- New air conditioning.
- Manned reception.
- New WC's on each floor.
- Bike racks and showers.

AVAILABLE ACCOMMODATION

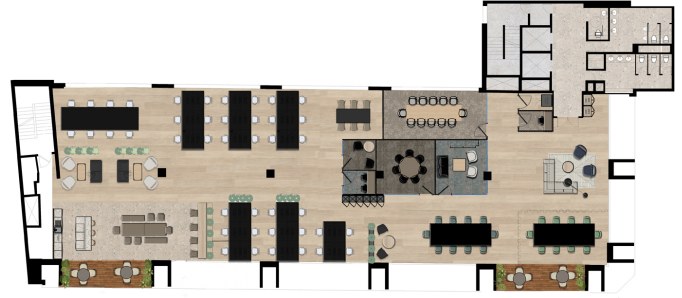
FLOOR	SQ FT	SQ M
FIFTH (TERRACE)	5,212	484
FIRST	6,132	570
TOTAL	11,344	1,054

MAP



FLOOR PLAN

Indicative Floor Plan



TENURE

Lease: New Lease for a term by arrangement.
 Guide Rent: From £55.00 per sq ft.
 Rates Est 5th floor: £14.30 per sq ft.
 Rates Est 1st floor: £14.90 per sq ft.
 Service Charge: Estimated £16.50 per sq ft.
 VAT: Elected.
 EPC: B39 (1st Floor).
 B35 (5th Floor).

CONTACT

Tom Kemp
 +44 (0)207 100 5555
 tom@hk-london.com

Louis Jacobs
 +44 (0)207 100 5555
 louis@hk-london.com

Monique Kelliher
 +44 (0)207 100 5555
 monique@hk-london.com

JOINT AGENT

Belcor
 +44 (0)2073753444

FURTHER INFORMATION

