

6 MIDDLE STREET, FARINGDON EC1

1,170 - 12,502 SQ FT



DESCRIPTION

6 Middle Street has undergone a significant transformation to provide seven new floors of contemporary light filled office space, finished to the highest standard. The building is crowned by a stunning duplex unit with an interlinking staircase which provides a truly unique working environment.

LOCATION

Occupiers will enjoy unrivalled transport connectivity with Crossrail, Three London Underground lines and City Thameslink services, under a minutes' walk from the building.

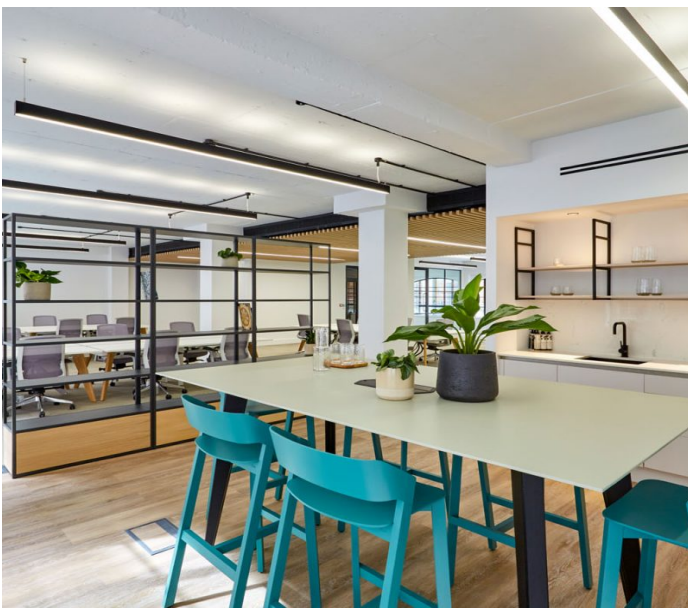
The building is situated within the heart of Smithfield Market and surrounded by some of London's most exciting restaurants, bars and world-renowned cultural institutions.

SPECIFICATION

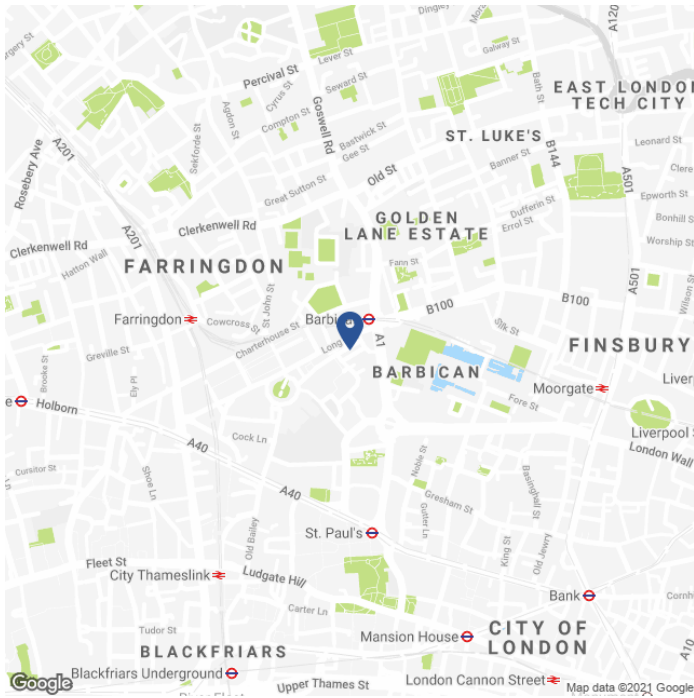
- New 'best in class' design and specification.
- 1:8 occupational density.
- Private terrace.
- New air conditioning.
- Unique duplex unit crowning building.
- Self contained ground and lower ground floors.
- High speed fibre connectivity.
- 26 cycle spaces with designated entrance.
- 28 lockers.
- Showers with private changing facilities.

AVAILABLE ACCOMMODATION

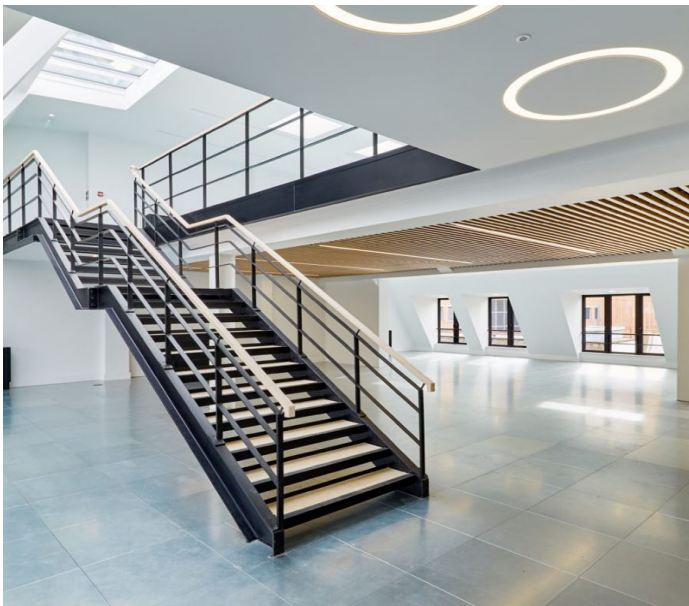
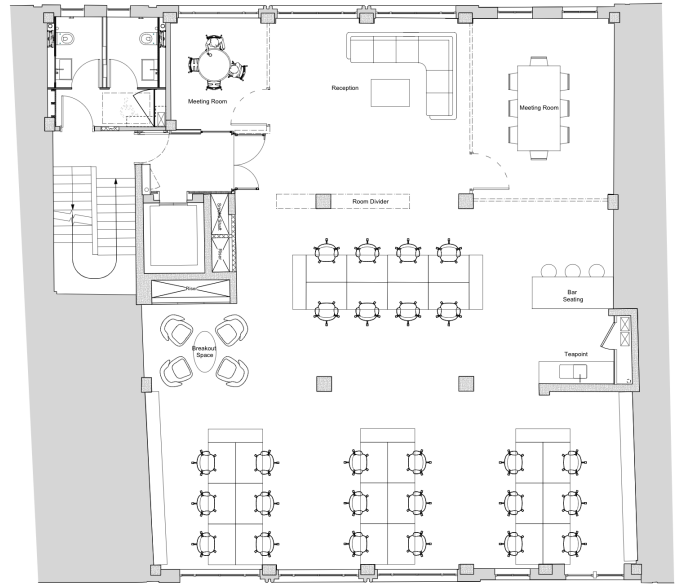
FLOOR	SQ FT	SQ M
FIFTH (MEZZANINE)	862	80
FOURTH	1,942	180
THIRD	2,218	206
SECOND	2,235	208
FIRST	2,226	207
GROUND	1,610	150
RECEPTION	239	22
LOWER GROUND	1,170	109
TOTAL	12,502	1,161



MAP



FLOOR PLAN



TENURE

Lease:	New Lease direct from the landlord.
Guide Rent:	£TBC per sq ft.
Business Rates:	£TBC per sq ft.
Service Charge:	£TBC per sq ft.
VAT:	Elected.
EPC:	B.

CONTACT

Stephen Foster
+44 (0)207 100 5555
stephen@hk-london.com

Tom Kemp
+44 (0)207 100 5555
tom@hk-london.com

Monique Kelliher
+44 (0)207 100 5555
monique@hk-london.com

FURTHER INFORMATION

