

127 CHEAPSIDE, LONDON EC2

935 - 3,958 SQ FT



DESCRIPTION

127 Cheapside has recently been refurbished to provide newly fitted out offices with exceptional natural light. Each floor benefits from a new kitchen and a variety of meeting room configurations.

LOCATION

The building is situated on the North side of Cheapside opposite One New Change.

St Paul's station is a minutes walk away. Bank, Mansion House, Cannon Street and City Thameslink are all within a short walk.

The Ned, Bloomberg Arcade and One New Change offer an exciting range of dining and shopping options.

Cultural highlights of the Southbank (Tate Modern, Shakespeares Globe) are easily accessed via the pedestrianised Millennium Bridge.

SPECIFICATION

- Newly refurbished building.
- Fitted out offices.
- New kitchens on every floor.
- High speed fibre.
- Excellent natural light.
- Comfort cooling.
- Male and female WC's.
- 24 hour access.
- Passenger lift.

AVAILABLE ACCOMMODATION

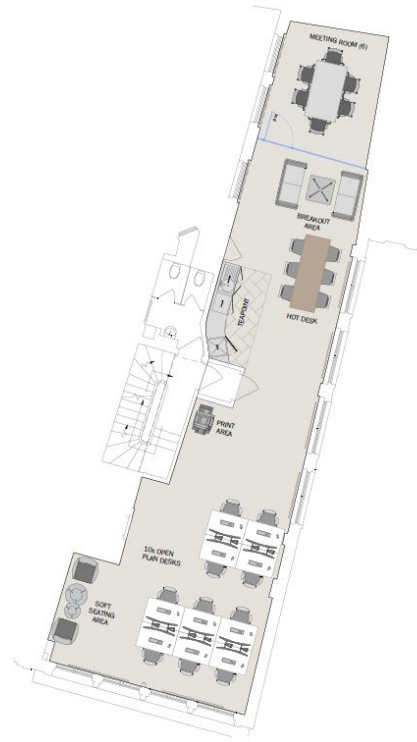
FLOOR	SQ FT	SQ M
FOURTH	935	87
THIRD	1,032	96
SECOND	1,009	94
FIRST	982	91
TOTAL	3,958	368

MAP



FLOOR PLAN

Third Floor



TENURE

Lease:	Flexible Lease from 12 months upwards.
Available:	Immediately.
Guide Rent:	£49.50 per sq ft.
Rates Estimate:	£15.84 per sq ft.
Service Charge:	£9.53 per sq ft.
VAT:	Elected.
EPC:	C.

CONTACT

Monique Kelliher
+44 (0)207 100 5555
monique@hk-london.com

Stephen Foster
+44 (0)207 100 5555
stephen@hk-london.com

Tom Kemp
+44 (0)207 100 5555
tom@hk-london.com

FURTHER INFORMATION

