

6 RAMILLIES STREET, LONDON W1

6,300 SQ FT



DESCRIPTION

6 Ramillies Street is a striking modern office building with a hexagonal window facade located where Soho meets Fitzrovia.

Local amenities are superb with retail on Carnaby Street and Oxford Street and multiple food + beverage options from quirky cafes to fine dining.

LOCATION

Located just off Oxford Street, 6 Ramillies Street is very well connected.

Oxford Street station is only a 2 minute walk away (Bakerloo, Central and Victoria lines), 5 minutes to Bond Street (Jubilee, Central and forthcoming Elizabeth line) and 8 minutes to Tottenham Court Road (Northern, Central and forthcoming Elizabeth line).

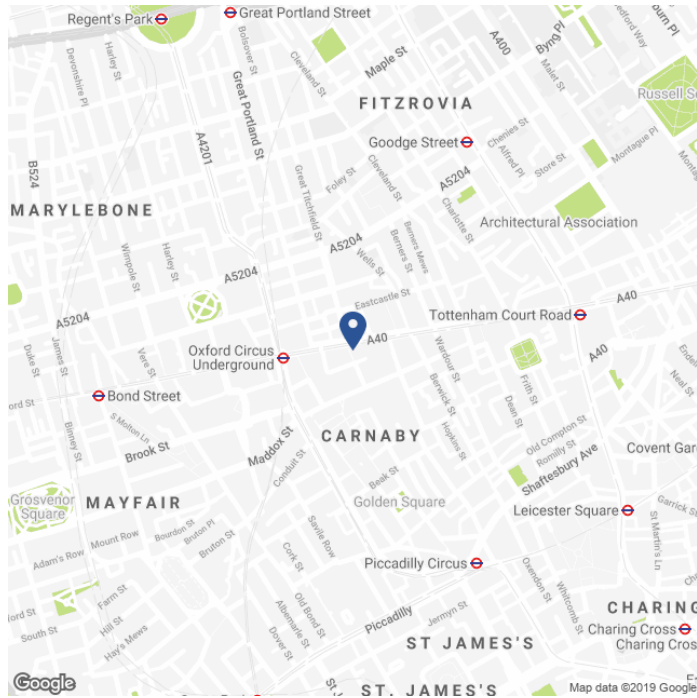
SPECIFICATION

- Fully fitted contemporary design.
- Reception, meeting rooms, large breakout area and open plan for up to 90 desks.
- Furniture available by separate negotiation.
- Manned reception.
- Air conditioning.
- Raised floor and suspended ceiling.
- Limited 'brush swept' reinstatement liability.

AVAILABLE ACCOMMODATION

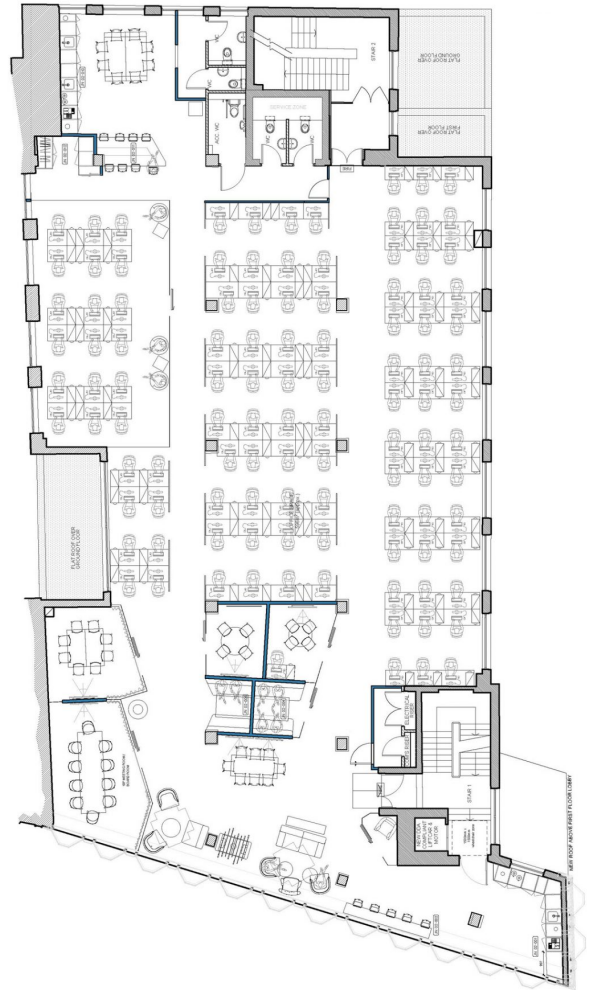
FLOOR	SQ FT	SQ M
SECOND	6,300	585
TOTAL	6,300	585

MAP



FLOOR PLAN

2nd Floor



TENURE

Lease: Sub-lease or assignment to 8/03/2026 with tenant only option to determine as at 8/03/2021. Alternatively, a new lease for a term by arrangement may be available from the landlord.
A license arrangement would also be considered.

Rent Passing: £66.13 per sq ft.

Rates Estimate: £21.50 per sq ft.

Service Charge: £8.90 per sq ft.

VAT: Elected.

CONTACT

Tom Kemp
+44 (0)207 100 5555
tom@hk-london.com

Stephen Foster
+44 (0)207 100 5555
stephen@hk-london.com

Johnny Armour
+44 (0)207 100 5555
johnny@hk-london.com