

BOUNDARY HOUSE, 7-17 JEWRY STREET, LONDON EC3

2,227 - 5,213 SQ FT



DESCRIPTION

Boundary House is situated within the City of London, where the traditional finance and insurance industries meet the creative sectors of the East.

Available floors provide good quality, economical accommodation in both fitted out and Category A condition.

LOCATION

Communications are excellent with numerous mainline and underground stations locally, such as Aldgate, Fenchurch Street and Tower Hill. The building is also close to the upcoming new Elizabeth Line at Liverpool Street.

Boundary House is within easy reach of an array of dining, shopping and cultural attractions namely Leadenhall Market, Spitalfields Market, St Katharine Docks and the Whitechapel Art Gallery.

SPECIFICATION

- Fitted out (ground & second floors).
- Excellent natural light.
- Manned reception.
- VRF air conditioning.
- Raised floors.
- Metal tiled suspended ceilings.
- Male & Female WC's.
- Basement storage.
- Secure bike storage.
- 24 hour access.
- Car parking.

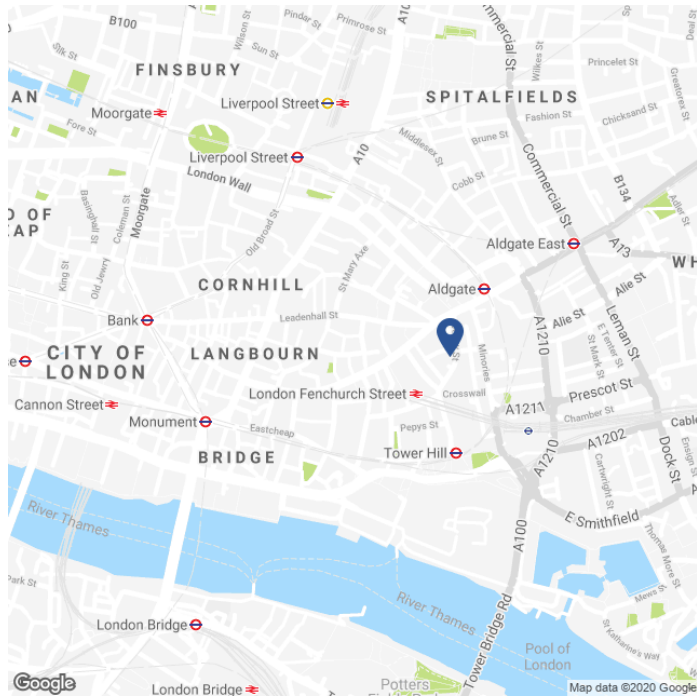
AVAILABLE ACCOMMODATION

FLOOR	SQ FT	SQ M
PART 3RD (NORTH)	2,986	277
PART 2ND (SOUTH)	2,227	207
TOTAL	5,213	484

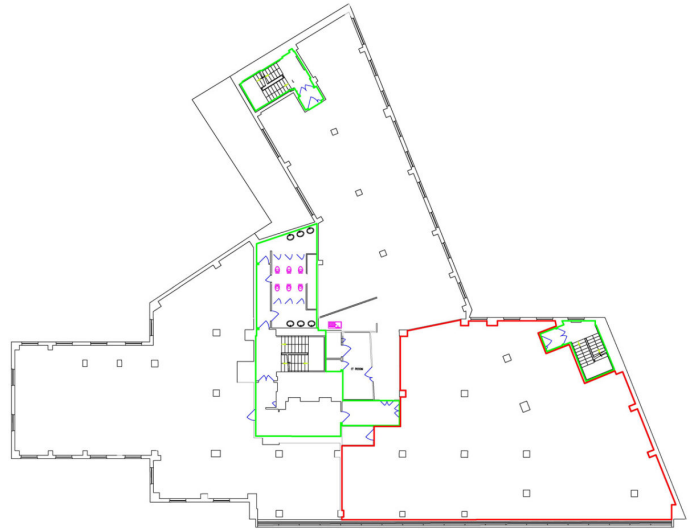


Taken prior to refurbishment

MAP



PART THIRD FLOOR



TENURE

Lease: New Lease direct from the landlord for a term until June 2021.

Guide Rent: £22.50 per sq.ft.

Rates Estimate: Pt 3rd £17.09 per sq.ft.
Pt 2nd £14.94 per sq.ft.

Service Charge: £7.20 per sq.ft.

VAT: Elected.

CONTACT

Stephen Foster
+44 (0)207 100 5555
stephen@hk-london.com

Monique Kelliher
+44 (0)207 100 5555
monique@hk-london.com

Tom Kemp
+44 (0)207 100 5555
tom@hk-london.com

JOINT AGENT

CBRE
+44 (0)20 71 82 2000

FURTHER INFORMATION

